

SAMPLE REPORT ONLY | LAPORAN CONTOH | SAMPLE REPORT — All data in this report is fictional and for demonstration purposes only. To order your real Straxio Snapshot Report: [hello@straxio.io](mailto:hello@straxio.io) | [straxio.io](https://straxio.io) | From USD 99

## STRAXIO INTELLIGENCE SCORE

78 /100

FAVORABLE — PROCEED TO  
NEXT STAGEProspek Baik | Lanjutkan ke Tahap  
Berikutnya | Yi jinxing xia yijieduan

Geological Potential: 82/100 STRONG  
License Area Status: 75/100 GOOD  
Forest Area Risk: 68/100 LOW-MED  
Infrastructure: 80/100 GOOD  
Adjacent IUP Context: 85/100 STRONG

Subject:  
Rencana Blok Bolaang Mongondow  
Gold Emas Huangjin  
Block A: 524.81 Ha  
Block B: 623.97 Ha  
Total: 1,148.78 Ha

## GREEN LIGHT FINDING | Prospek Positif Teridentifikasi | Lüde ng faxian

[EN] The Rencana Blok Bolaang Mongondow sits within the TQpv (Pinogu Volcanic Formation) — a proven gold-bearing volcanic unit in Sulawesi Utara. Two hydrothermal hot springs identified within 2km of Block B confirm active geothermal system consistent with epithermal gold mineralization. Adjacent IUP PT J Resources Bolaang Mongondow (world-class gold producer) confirms district-scale geological continuity. Block A and B are dominantly APL (non-forest) with manageable HPT buffer to the east. Straxio recommends PROCEED to detailed geological mapping and sampling program.

[ID] Blok berada di Formasi Vulkanik TQpv dengan dua mata air panas hidrotermal di dekat Blok B — indikator kuat mineralisasi emas epitermal. IUP PT J Resources yang berdekatan mengkonfirmasi kontinuitas geologi skala distrik. Straxio merekomendasikan LANJUTKAN ke pemetaan geologi detail dan program sampling.

[CN] 该地块位于TQpv 火山地层, Block B 附近两处热泉证实活跃地热系统, 与浅成低温热液金矿化一致。相邻PT J Resources 金矿(世界级) 证实区域地质连续性。Straxio 建议推进详细地质填图和采样计划。

## IUP IDENTITY | IDENTITAS BLOK | KUANGQUAN XINXI

Field	Value	Field	Value
Subject Name	Rencana Blok Bolaang Mongondow	Commodity	Gold / Emas / Huangjin (Au)
Location	Kec. Lolayan, Kab. Bolaang Mongondow, Prov. Sulawesi Utara	Total Area	1,148.78 Ha (Block A: 524.81 + Block B: 623.97)
Coordinates	124 23-124 27E 0 56-0 64N UTM Zone 51N WGS84 EPSG:32651	License Stage	IUP Application — Rencana Blok
Host Formation	TQpv Batuan Gunungapi Pinogu Volcanic Gold Host	Key Indicator	2 Hot Springs proximal to Block B Hydrothermal Gold Indicator
Adjacent World-class IUP	KK PT J Resources Bolaang Mongondow Emas Major Gold Producer	Map Date	08 June 2026 UTM 51N WGS84 Scale 1:50,000

## GEOLOGICAL ASSESSMENT | PENILAIAN GEOLOGI | DIZHI PINJIA

Parameter	Assessment   Penilaian   Pinjia
Host Formation	TQpv Batuan Gunungapi Pinogu (Pliocene-Quaternary Volcanic) — proven gold-bearing formation in Sulawesi Utara. Consistent with porphyry-epithermal gold systems of the Western Pacific magmatic arc.
Hydrothermal Indicators	2 active hot springs identified proximal to Block B (within 1.5-2km). Direct evidence of active hydrothermal circulation — most critical positive indicator for epithermal gold system.
Adjacent IUP — World Class	KK PT J Resources Bolaang Mongondow is a world-class gold producer operating in the same TQpv formation immediately east. Confirms district-scale gold mineralization continuity.
Structural Setting	Regional NW-SE structural fabric consistent with trans-tensional settings favorable for epithermal vein gold. Multiple fault intersections mapped within block area.
Geological Map Reference	Peta Geologi Lembar Kotamobagu, Sulawesi (ESDM). Scale 1:250,000. TQpv confirmed as primary host unit across both blocks.
IUP Sekitar Lainnya	IUP Koperasi Perintis Kud and IUP PT Berkat Abadi Korindo Emas adjacent to Block A — confirms active gold exploration district with multiple operators.

## FOREST AREA ASSESSMENT | PENILAIAN KAWASAN HUTAN | SENLIN PINJIA

Forest Category	Risk Level	Finding   Temuan
Block A — APL (Area Penggunaan Lain)	LOW	Block A is dominantly APL — non-forest area. Minimal forest permitting required. Favorable for IUP application progress.
Block B — APL (Area Penggunaan Lain)	LOW	Block B is also dominantly APL. No significant overlap with protected forest categories detected.
HP Hutan Produksi	LOW	Small HP area in far northern buffer only. Does not materially overlap with primary target blocks A or B.
HPT Hutan Produksi Terbatas	MEDIUM	HPT present to the east of blocks. Adjacent but not overlapping. Monitor for buffer zone compliance.
TN Taman Nasional — 2km Buffer	MEDIUM	Taman Nasional boundary to the west. 2km buffer zone active. Block A western edge requires precise boundary confirmation. Buffer does not extend into Block B.
HL Hutan Lindung	NONE	No Hutan Lindung detected within or immediately adjacent to either block.

## STRAXIO RECOMMENDATION — PROCEED | Rekomendasi: LANJUTKAN

[EN] Straxio Intelligence Score 78/100 indicates FAVORABLE potential for gold exploration. The combination of TQpv volcanic host formation, two proximal hot springs (direct hydrothermal indicator), and proximity to world-class PT J Resources operation provides a compelling geological case. Forest risk is manageable with Block A and B both dominantly APL. Recommended next steps: (1) Detailed geological surface mapping to identify alteration zones and vein systems, (2) Stream sediment and soil geochemical sampling program, (3) Structural analysis to identify drill targets, (4) File IUP application — proceed with confidence.

[ID] Skor 78/100 menunjukkan potensi BAIK untuk eksplorasi emas. Kombinasi formasi vulkanik TQpv, dua mata air panas hidrotermal, dan kedekatan dengan PT J Resources memberikan argumen geologi yang kuat. Risiko kawasan hutan dapat dikelola. Straxio merekomendasikan LANJUTKAN ke pemetaan detail dan program geokimia.

[CN] 78/100 分表明金矿勘探潜力良好。TQpv 火山地层、两处热泉和PT J Resources 相邻作业的组合提供了强有力的地质依据。林地风险可控。Straxio 建议推进详细地质填图和地球化学采样计划。

## RECOMMENDED NEXT STEPS | LANGKAH REKOMENDASI

## Recommended Next Steps | Langkah Rekomendasi | Jianyi houxi buzhou

- Detailed Geological Mapping** — Surface mapping 1:10,000 scale to identify alteration zones, vein systems, and structural controls. Focus on Block B area near hot springs. Estimated 2-4 weeks fieldwork.
- Geochemical Sampling Program** — Stream sediment sampling across full block + soil sampling on Block B anomaly zones. Analyze for Au, Ag, Cu, As, Sb, Hg pathfinder elements.
- IUP Application Process** — File IUP application through ESDM/MODI. Forest status is favorable (APL dominant). Engage KLHK for HPT buffer zone compliance confirmation.
- Upgrade to Intelligence Report** — Straxio Intelligence Report (USD 2,000) provides full JORC-compliant analysis including drill

target identification, resource potential estimate, full CPI sign-off, and investor-ready presentation. Need full due diligence? Upgrade to Due Diligence Report (USD 20,000) — excludes field survey.

**RISK SUMMARY | RINGKASAN RISIKO | FENGXIAN ZHAIYAO**

Risk Factor	Level	Finding
Geological Potential	LOW	TQpv volcanic formation with hot spring indicators strongly favorable for epithermal gold.
License Area Status	LOW	Rencana Blok on APL land — favorable for IUP application. No major permitting obstacles.
Forest Area Risk	LOW-MED	Block A and B dominantly APL. TN buffer 2km west of Block A requires precise boundary confirmation.
Infrastructure Access	LOW	Reasonably accessible from Kotamobagu via existing road network. Adequate for exploration phase.
Adjacent Competition	MEDIUM	Multiple active IUPs in district. Early mover advantage important — file IUP application promptly.
Geological Uncertainty	MEDIUM	No drilling data yet. Hot springs and geological mapping provide strong surface indicators. Drill-ready after mapping phase.

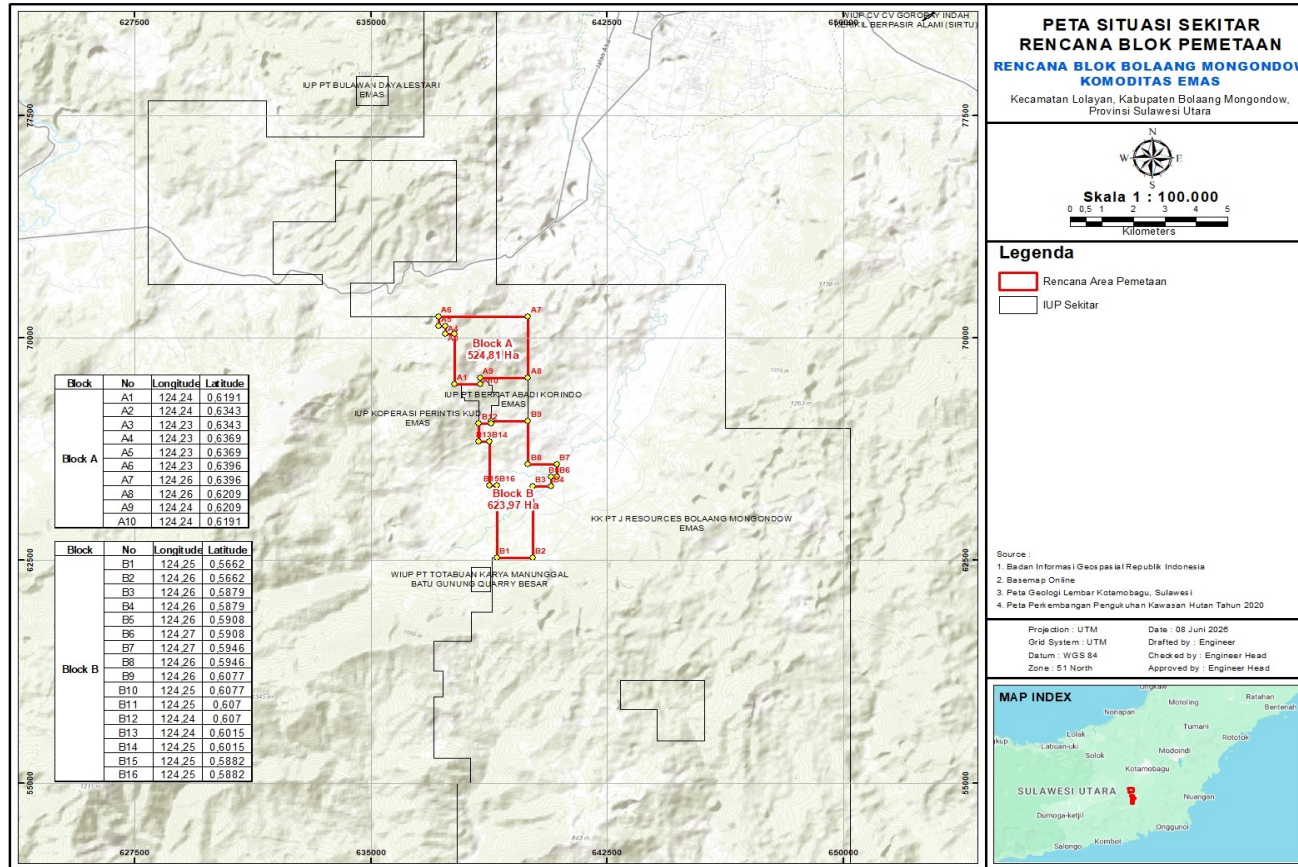
**REPORT AUTHORIZATION | OTORISASI LAPORAN**

Geological Review and Verification	Report Generated by
<hr/> <b>Senior Geologist GEOCEE</b> Competent Person Indonesia (CPI) Registered PT Citra Eksplor Energi (GEOCEE) 2026 Full CPI name and signature in Intelligence Report (USD 2,000)	<hr/> <b>Straxio Intelligence Engine</b> Powered by GEOCEE Internal Geological Database straxio.io SAMPLE-2026-001-AU

*SAMPLE REPORT DISCLAIMER: All data, names, coordinates, and findings in this sample report are for demonstration purposes only. No actual IUP, company, or transaction is represented. This sample demonstrates the format and analytical depth of a real Straxio Snapshot Report. To order your real report: hello@straxio.io | straxio.io | Snapshot from USD 99*

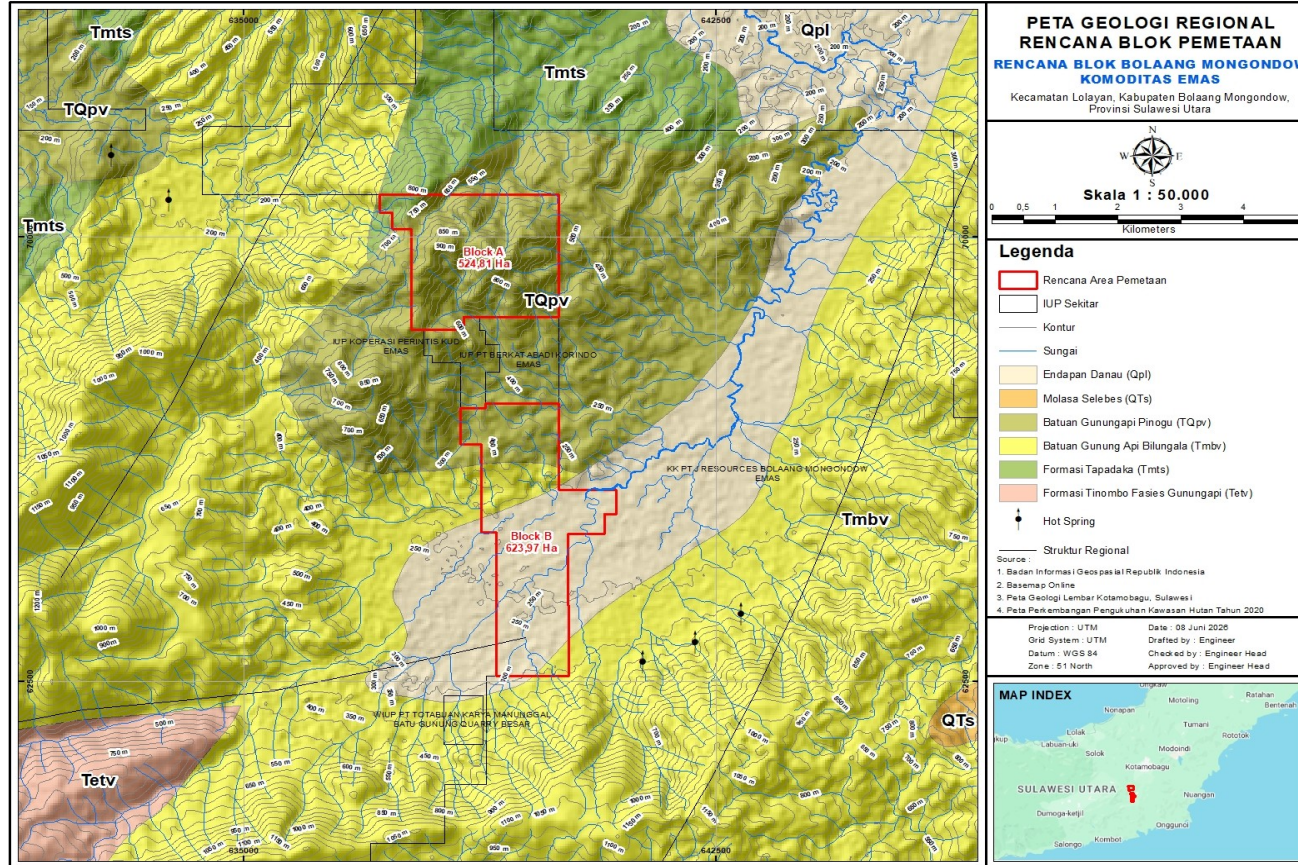
<p><b>Want this intelligence for YOUR mineral concession?</b></p> <p>Snapshot USD 99   Intelligence USD 2,000   Due Diligence USD 20,000   CPI Verified   3 Languages</p>	<p>hello@straxio.io</p> <p><b>straxio.io</b></p>
---	--

**MAP 1/3 PETA SITUASI SEKITAR - SITUATION AND ADJACENT IUP MAP**



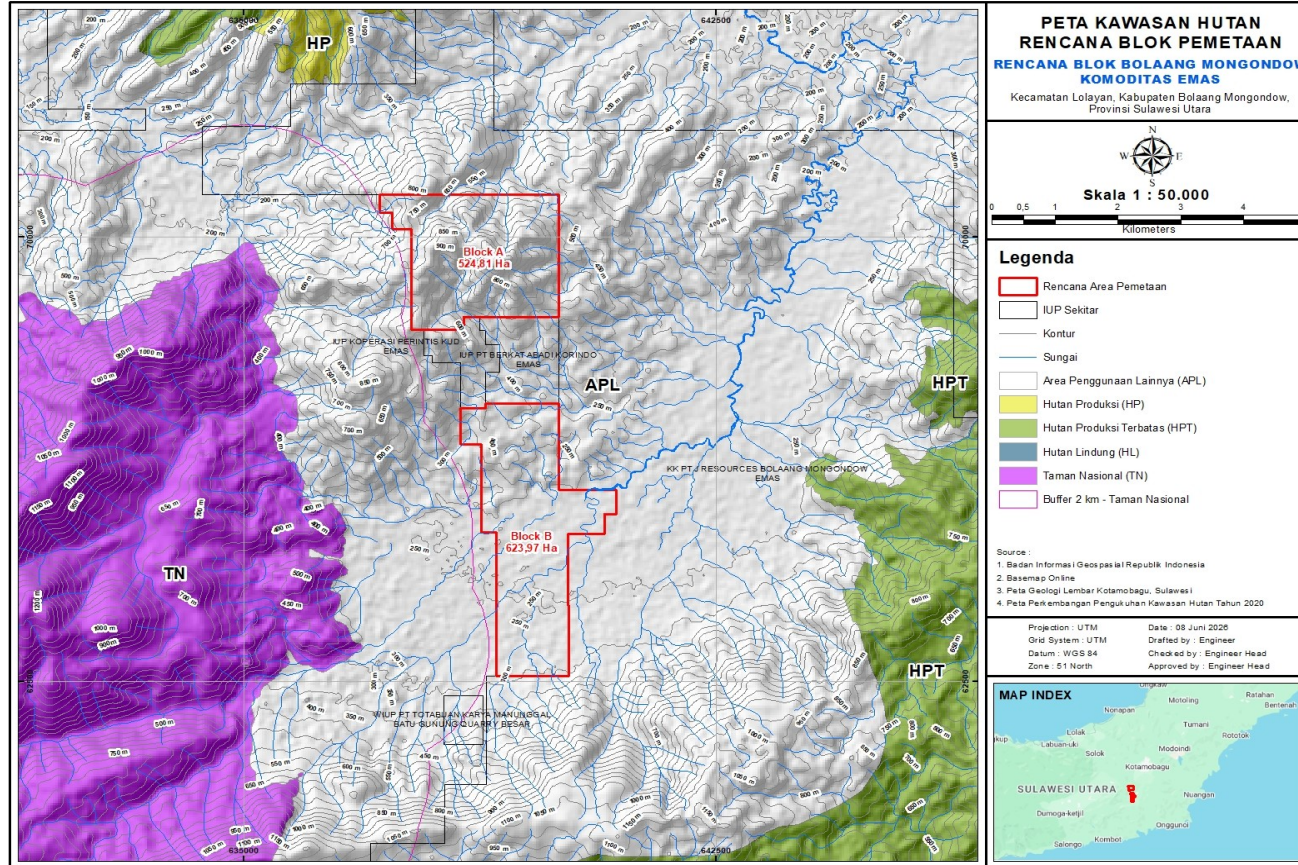
Subject <b>Rencana Blok Bolaang Mongondow</b>	Commodity <b>Gold Emas Au</b>	Block A <b>524.81 Ha 10 coordinate points</b>	Block B <b>623.97 Ha 16 coordinate points</b>	Adjacent World-class <b>KK PT J Resources Bolaang Mongondow</b>	Report <b>SAMPLE-2026-001-AU</b>
--	----------------------------------	--	--	--	-------------------------------------

MAP 2/3 PETA GEOLOGI REGIONAL - TQPv VOLCANIC GOLD HOST FORMATION



Host Formation <b>TQpv Batuan Gunungapi Pinogu</b>	Gold Indicator <b>2 Hot Springs proximal Block B</b>	Adjacent Producer <b>KK PT J Resources (World-class Gold)</b>	Geol. Map <b>Lembar Kotamobagu ESDM</b>	Gold Prospectivity <b>HIGH - Volcanic epithermal system</b>	Straxio Score <b>78/100 FAVORABLE</b>
---	---	--	--	--	--

**MAP 3/3 PETA KAWASAN HUTAN - FOREST AREA ASSESSMENT**



Block A Forest <b>APL Dominant - LOW risk</b>	Block B Forest <b>APL Dominant - LOW risk</b>	TN Buffer <b>2km west of Block A - monitor</b>	HPT <b>Adjacent east - no overlap</b>	Overall Forest Risk <b>LOW-MEDIUM - Manageable</b>	Data Source <b>RTRW 2014 KLHK 2020</b>
--	--	---	--	---	---